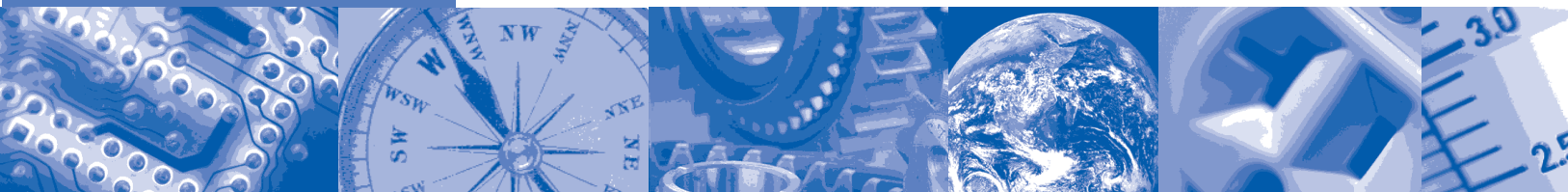


ANSI/ISA–75.17–1989

Formerly ANSI/ISA–S75.17-1989



Control Valve Aerodynamic Noise Prediction



ISA–The Instrumentation,
Systems, and
Automation Society

Approved 19 June 1991

ANSI/ISA-75.17-1989, Control Valve Aerodynamic Noise Prediction

ISBN 1-55617-207-9

Copyright © 1989 by the Instrument Society of America. All rights reserved. Printed in the United States of America. No part of this publication may be reproduced, stored in a retrieval system, or transmitted in any form or by any means (electronic, mechanical, photocopying, recording, or otherwise), without the prior written permission of the publisher.

ISA
67 Alexander Drive
P.O. Box 12277
Research Triangle Park, North Carolina 27709

Preface

This preface is included for informational purposes and is not part of ANSI/ISA-75.17-1989.

This standard has been prepared as part of the service of ISA toward a goal of uniformity in the field of instrumentation. To be of real value, this document should not be static, but should be subject to periodic review. Toward this end, the Society welcomes all comments and criticisms, and asks that they be addressed to the Secretary, Standards and Practices Board, ISA, 67 Alexander Drive, P.O. Box 12277, Research Triangle Park, NC 27709, Telephone (919) 549-8411, e-mail: standards@isa.org.

The ISA Standards and Practices Department is aware of the growing need for attention to the metric system of units in general, and the International System of Units (SI) in particular, in the preparation of instrumentation standards. The Department is further aware of the benefits to USA users of ISA standards of incorporating suitable references to the SI (and the metric system) in their business and professional dealings with other countries. Toward this end, this Department will endeavor to introduce SI-acceptable metric units in all new and revised standards to the greatest extent possible. *The Metric Practice Guide*, which has been published by the Institute of Electrical and Electronics Engineers as ANSI/IEEE Std. 268-1982, and future revisions, will be the reference guide for definitions, symbols, abbreviations, and conversion factors. Certain metric units that are not a part of the SI system are in common accepted use. This standard uses bar as a pressure measurement that is convertible to kilopascals by multiplying by 100.

It is the policy of ISA to encourage and welcome the participation of all concerned individuals and interests in the development of ISA standards. Participation in the ISA standards-making process by an individual in no way constitutes endorsement by the employers of the individual, of the ISA, or of any of the standards that ISA develops.

The information contained in the preface, footnotes, and appendices is included for information only and is not a part of the standard.

The following people served as members of ISA Committee SP75.17, which prepared this standard.

NAME

COMPANY

J. Arant, Chairman
G. E. Barb
R. Barnes
H. Baumann
B. A. Broxterman
D. Cindrick
L. R. Driskell
J. T. Emery
A. Fagerlund
A. Gharabegian
H. Illing
J. Kahrs

E. I. du Pont de Nemours & Co. (Retired)
Anchor/Darling
Valtek, Incorporated
H. D. Baumann Assoc., Ltd.
Jordan Valve
M. W. Kellogg Company
Les Driskell, P.E.
Honeywell, Inc.
Fisher Controls International, Inc.
Engineering Science
DeZurik Valve Company
Consultant

C. G. Langford, Vice Chairman
H. L. Miller
P. J. Nemergut
K. W. Ng
W. Rahmeyer
J. N. Reed
G. Reethof
F. O. Seger
A. K. Shea
E. A. Skovgaard
R. F. Tubbs
J. Wang
W. C. Weidman

E. I. du Pont de Nemours & Co.
Control Components, Inc.
E. I. du Pont de Nemours & Co.
Naval Underwater Systems Ctr.
Utah State University
Masoneilan/Dresser
Pennsylvania State University (Retired)
Masoneilan/Dresser
Copes-Vulcan, Inc.
Leslie Controls, Inc.
Copes-Vulcan, Inc.
Exxon Research & Engineering
Gilbert/Commonwealth, Inc.

The following people served as members of ISA committee SP75:

NAME	COMPANY
L. R. Zinck, Chairman	Union Carbide Corp.
J. B. Arant	Consultant
H. E. Backinger	J. F. Kraus & Company
G. E. Barb	Anchor/Darling Valve Company
R. W. Barnes/F. Cain*	Valtek Controls, Ltd.
H. D. Baumann	H. D. Baumann Assoc., Ltd.
G. Borden, Jr.	Stone and Webster Engineering Corp.
R. R. Brodin/F. Harthun*	Fisher Controls International, Inc.
E. C. Brown	Dravo Engineers, Inc.
E. J. Cooney	Air Products & Chemicals, Inc.
L. R. Driskell	Consultant
J. T. Emery	Honeywell, Inc.
H. J. Fuller	Consultant
L. F. Griffith	Consultant
A. J. Hanssen	Retired
B. A. Hart	M. W. Kellogg
H. Illing	DeZurik Valve Company
R. L. Jeanes	Texas Utilities Electric
C. I. Koloboff	Chevron Corp.
J. D. Leist	Dow Chemical USA
R. A. Louviere	Creole Engineering
O. P. Lovett, Jr.	Consultant
P. C. Martin	Hammel Dahl & Jamesbury Cont.
A. P. McCauley, Jr.	Chagrin Valley Controls, Inc.
H. L. Miller	Control Components, Inc.
T. V. Molloy	Pacific Gas & Electric
H. R. Nickerson	Consultant
J. Ozol	Omaha Public Power Company
R. A. Quance	Consultant

*One vote per company

W. Rahmeyer
 J. R. Reed
 G. Richards
 T. Rutter
 H. Schwartz
 K. G. Schoonover
 W. L. Scull
 H. R. Sonderegger
 R. U. Stanley
 R. E. Terhune
 R. F. Tubbs
 W. C. Weidman
 R. L. Widdows

Utah State University
 Masoneilan/Dresser
 Richards Industries, Inc.
 Fluid Controls Institute, Inc.
 Flexible Valve Corp.
 Con-Tek
 Everlasting Valve Co.
 Grinnell Corp. R D & E
 Retired
 Consultant
 Copes-Vulcan, Inc.
 Gilbert/Commonwealth, Inc.
 Cashco, Inc.

This standard was approved for publication by the ISA Standards and Practices Board in 1989.

NAME	COMPANY
D. Bishop, Vice-President	Chevron U.S.A. Inc.
N. Conger	Fisher Controls International, Inc.
C. Gross	Eagle Technology
H. Hopkins	Utility Products of Arizona
R. Jones	Dow Chemical Company
A. McCauley	Chagrin Valley Controls, Inc.
E. Nesvig	ERDCO Engineering Corp.
R. Prescott	Moore Products Company
D. Rapley	Rapley Engineering Service
R. Reimer	Allen-Bradley Company
J. Rennie	Factory Mutual Research Corporation
W. Weidman	Gilbert/Commonwealth, Inc.
J. Whetstone	National Inst. of Standards & Technology
M. Widmeyer	Washington Public Power Supply
P. Bliss*	Consultant
W. Calder III*	The Foxboro Company
B. Christensen*	Consultant
L. Combs*	Consultant
R. Galley*	Consultant
T. Harrison*	Florida State University
R. Jones*	Philadelphia Electric Company
R. Keller*	Consultant
O. Lovett*	Consultant
E. Magison*	Honeywell, Inc.
R. Marvin*	Consultant
W. Miller*	Moore Products Company
J. Mock*	Bechtel Western Power Corporation
G. Platt*	Consultant
J. Williams*	Stearns Catalytic Corporation

*Director Emeritus

Contents

1 Scope	9
2 Limitations	9
3 Nomenclature	10
4 Pressures and pressure ratios	12
5 Regime definition	13
6 Preliminary calculations	14
7 Regime I (subsonic flow)	15
8 Common equations for sonic and above	16
9 Regime II	17
10 Regime III	17
11 Regime IV	18
12 Regime V	19
13 Noise Calculations	19
14 Calculation flow chart	21
Appendix A — References	22
Appendix B — Example.....	23

1 Scope

This standard establishes a method to predict the noise generated in a control valve of standard design by the flow of compressible fluid and the resulting noise outside of the pipe and downstream of the valve. The transmission loss (T_L) equations are based on a rigorous analysis of the interaction between the sound waves that exist in the pipe and the many coincidence frequencies in the pipe wall. Commercial pipe specifications allow a relatively wide tolerance in pipe wall thickness. This limits the value of the very complicated mathematical methods required for a rigorous analysis; calculations prove that a simplified expression is justified.

The equations in this standard make use of the valve sizing factors defined in ANSI/ISA-S75.01 and ANSI/ISA-S75.02.

This method was developed from the fundamental principles of acoustics, fluid mechanics, and mechanics.

2 Limitations

The method presented in this standard considers only single-phase dry gases and vapors; it is based on the perfect gas laws. Predictions are limited at this time to a downstream maximum velocity of Mach 0.3. Ideal straight metal pipe is assumed downstream. Uncertainties become greater as the fluid behaves less perfectly for extreme temperatures and for downstream pressures far different from atmospheric or if near the critical point.

The method can be used with all conventional control valve styles including: globe, butterfly, cage type (but not with low-noise trim), and modified ball types. Specifically excluded are multistage proprietary low-noise valves and full-bore ball valves.

This standard addresses only aerodynamic noise and does not consider any noise generated by mechanical vibrations, unstable flow patterns, and other unpredictable behavior.

In the typical control valve, little noise travels through the wall of the control valve. The noise of interest is that which travels downstream of the valve inside the pipe and then escapes through the wall of the pipe to be measured typically at 1 meter (3 feet) downstream of the valve body and 1 meter (3 feet) away from the outside surface of the pipe.

The majority of the test data available to validate the method is from air at moderate downstream pressures and temperatures; however, it is believed that the method is generally applicable for other gases and vapors and at higher pressures. The equations include terms that account for fluid density and ratios of specific heat.

3 Nomenclature

Symbol	Description	Customary US Units	SI Units
c_2	Speed of sound, downstream	ft/s	m/s
C_V	Valve flow coefficient	gpm/ $\sqrt{\text{psid}}$	[1]
c_{VC}	Speed of sound at the vena contracta at subsonic flow conditions	ft/s	m/s
c_{VCC}	Speed of sound at the vena contracta at sonic flow conditions	ft/s	m/s
D_j	Diameter of jet	ft	m
D_i	Diameter, internal, pipe [2]	ft	m
F_d	Modifier, valve style	dimensionless	dimensionless
F_L	Liquid pressure recovery factor	dimensionless	dimensionless
F_{LP}	Product of the liquid pressure recovery factor of a valve with attached fittings and the piping geometry factor	dimensionless	dimensionless
f_p	Frequency, peak, generated inside pipe	Hz	Hz
F_P	Piping geometry factor	dimensionless	dimensionless
f_o	Frequency, coincidence	Hz	Hz
g_c	Gravitational constant	32.17 lbfm-ft/lbf-s ²	[3]
k	Ratio of specific heats	dimensionless	dimensionless
L_g	Correction for pipe Mach number	dB	dB
L_{pi}	Sound pressure level, internal	dB	dB
L_a	"A"-weighted sound level	dB (A)	dB (A)
M_j	Mach number, freely expanded, in the jet	dimensionless	dimensionless
M_n	Mach number	dimensionless	dimensionless
M_W	Molecular weight	lbm/lbm-mole	kg/kg-mole
N_O	Number of apparent, independent, flow passages in the valve trim	dimensionless	dimensionless
N	Numerical constants	[4]	[4]
P_a	Pressure, outside pipe, absolute	lbf/ft ²	Pa
P_1	Pressure, upstream, absolute	lbf/ft ²	Pa
P_2	Pressure, downstream, absolute	lbf/ft ²	Pa
P_{2B}	Pressure, outlet at break point, absolute	lbf/ft ²	Pa
P_{2C}	Pressure, outlet at critical flow conditions, absolute	lbf/ft ²	Pa
P_{2CE}	Pressure, outlet where region of constant acoustic efficiency begins, absolute	lbf/ft ²	Pa
P_{VC}	Pressure, vena contracta, at subsonic flow conditions, absolute	lbf/ft ²	Pa

Symbol	Description	Customary US Units	SI Units
P_{VCC}	Pressure, vena contracta, at critical flow conditions, absolute	lbf/ft ²	Pa
P_O	Pressure, standard, reference	2116 lbf/ft ² [5]	101325 Pa
r	Radial distance centerline of pipe to observer [6]	ft	m
R	Universal Gas Constant	1545 ft-lbf / lbm-mol-°R	8314 J/kgmole-K
T_1	Temperature, upstream, absolute	°R	K
T_2	Temperature, downstream, absolute	°R	K
T_{VC}	Temperature, vena contracta, at subsonic flow conditions, absolute	°R	K
T_{VCC}	Temperature, vena contracta, at critical flow conditions, absolute	°R	K
t_p	Pipe wall thickness	ft	m
T_L	Transmission loss	dB	dB
T_{Lfo}	Transmission loss at coincidence frequency	dB	dB
ΔT_{Lfp}	Correction for ratio of peak frequency and coincidence frequency	dB	dB
U_{VC}	Velocity, vena contracta, at subsonic flow conditions	ft/s	m/s
U_{VCC}	Velocity, vena contracta, at critical flow conditions	ft/s	m/s
w	Mass flow rate	lbm/s	kg/s
W_m	Stream power of mass flow	ft-lbf/s	W
W_{ms}	Stream power of mass flow at sonic velocity	ft-lbf/s	W
w_s	Mass flow rate at sonic velocity	lbm/s	kg/s
W_a	Sound power	ft-lbf/s	W
α	Recovery correction factor	dimensionless	dimensionless
η	Acoustical efficiency factor	dimensionless	dimensionless
ρ_1	Mass density, upstream	lbm/ft ³	kg/m ³
ρ_2	Mass density, downstream	lbm/ft ³	kg/m ³

NOTES:

- 1) Units for valve flow coefficient K_V are m³/h. Substitute 1.157 K_V for C_V . The SI unit is $A_V = 2.40 \times 10^{-5} C_V$. K_V is not SI; its use is discouraged.
- 2) Usually, nominal diameter can be used with little loss in accuracy.
- 3) g_C is not required in the SI system; use a value = 1.00 in the equations.
- 4) Values of numerical constants are given in [Table 1](#).
- 5) 2116 lbf/ft² = 14.696 lbf/in²
- 6) The distance r is typically taken as 1 m (3 ft) plus the outer pipe radius.

Table 1 — Numerical constants, N

Constant		Units Used in Equations				
	<i>N</i>	<i>D_i, D_j</i> <i>r, t_p</i>	<i>W_a</i>	ρ_2	<i>c₂</i>	<i>P₁, P₂</i> <i>P_a, P₀</i>
<i>N_J</i>	1.5 X 10 ⁻² 4.6 X 10 ⁻³	ft m				
<i>N_L</i>	5.7 X 10 ¹⁰ 8.0 X 10 ⁸	ft m	ft-lbf/s <i>W</i>	lbm/ft ³ kg/m ³	ft/s m/s	
<i>N_T</i>	1.1 X 10 ⁻⁷ 1.1 X 10 ⁻⁷	ft m				lbf/ft ² Pa
<i>N_F</i>	1.6 X 10 ⁴ 5.0 X 10 ³	ft m				
<i>N_P</i>	1.5 X 10 ⁻⁴ 1.3 X 10 ⁻⁵	ft m				lbf/ft ² Pa
<i>N_S</i>	7.0 X 10 ⁻³ 6.5 X 10 ⁻⁴	ft m				

4 Pressures and pressure ratios

The pressure in the vena contracta is developed from the definition of F_L (see ANSI/ISA-S75.01):

$$P_{vc} = P_1 - \frac{(P_1 - P_2)}{F_L^2} \quad (4.1)$$

NOTE: When the valve has attached fittings, replace F_L with F_{LP}/F_P .

The pressure in the vena contracta at critical flow conditions is:

$$P_{vcc} = P_1 \left(\frac{2}{k+1} \right)^{\left(\frac{k}{k-1} \right)} \quad (4.2)$$

The downstream pressure where sonic flow begins is:

$$P_{2C} = P_1 - F_L^2 (P_1 - P_{vcc}) \quad (4.3)$$

NOTE: When the valve has attached fittings, replace F_L with F_{LP}/F_P .

The factor α , the ratio between the external pressure ratio and the internal pressure ratio at critical pressure drop, is defined:

$$\alpha = \frac{\left(\frac{P_1}{P_{2C}}\right)}{\left(\frac{P_1}{P_{vcc}}\right)} = \frac{P_{vcc}}{P_{2C}} \quad (4.4)$$

The downstream pressure at the break point between Regimes III and IV (see [Section 5](#) for definitions of regimes) is:

$$P_{2B} = \frac{P_1}{\alpha} \left(\frac{1}{k}\right)^{\left(\frac{k}{k-1}\right)} \quad (4.5)$$

The downstream pressure at the start of the region of "constant acoustic efficiency," where any further decrease in P_2 will result in no increase in noise, is:

$$P_{2CE} = \frac{P_1}{22\alpha} \quad (4.6)$$

5 Regime definition

A control valve controls flow by converting pressure energy into kinetic energy; some of this energy is transferred to the pipe wall as vibration, and a portion of this is radiated as noise. Most of the energy is converted to heat through viscous friction.

At the vena contracta there is a pressure that may be even lower than the downstream pressure.

The different regimes of noise generation are the result of differing sonic phenomena or reactions between the molecules in the gas and the sonic shock cells.

In Regime I, flow is subsonic and the gas pressure is partially recovered or recompressed, thus the use of the factor F_L .

In Regime II, sonic flow exists, with interaction between shock cells and with turbulent choked flow mixing. Pressure recovery is less as the limit of Regime II is approached.

In Regime III no isentropic pressure recovery takes place.

In Regime IV the shock cell structure diminishes as a "Mach disk" is formed.

In Regime V there is a constant acoustic efficiency.

$$\text{IF: } P_1 > P_2 \geq P_{2C} \quad \text{THEN REGIME} = \text{I} \quad (5.1)$$

$$\text{IF: } P_{2C} > P_2 \geq P_{vcc} \quad \text{THEN REGIME} = \text{II} \quad (5.2)$$

$$\text{IF: } P_{vcc} > P_2 \geq P_{2B} \quad \text{THEN REGIME} = \text{III} \quad (5.3)$$

$$\text{IF: } P_{2B} > P_2 \geq P_{2CE} \quad \text{THEN REGIME} = \text{IV} \quad (5.4)$$

$$\text{IF: } P_{2CE} > P_2 \geq 0 \quad \text{THEN REGIME} = \text{V} \quad (5.5)$$

6 Preliminary calculations

N_o is the number of apparent independent flow passages. Note that for cage-type trims this is usually the number of openings in the cage. Where a number of flow passages are in close proximity, as in some cage trims, the values require tests. The valve style modifier F_d (see [Table 2](#)) is:

$$F_d = N_o^{(-1/2)} \quad (6.1)$$

For flow-to-open valves with contoured plugs at small openings, a special case occurs:

$$F_d = 0.7 \left(\frac{N_s C_v F_L}{4 D_i^2} \right)^{(1/2)} \quad (6.2)$$

F_d (maximum) = 0.7 for this equation.

NOTE: Use the required value of C_v , not the rated value of C_v .

The jet diameter is:

$$D_j = N_j F_d (C_v F_L)^{(1/2)} \quad (6.3)$$

NOTE: Use the required value of C_v , not the rated value of C_v .

The Mach number in a freely expanded jet is:

$$M_j = \left\{ \left(\frac{2}{k-1} \right) \left[\left(\frac{P_1}{\alpha P_2} \right)^{\left(\frac{k}{k-1} \right)} - 1 \right] \right\}^{(1/2)} \quad (6.4)$$

7 Regime I (subsonic flow)

The temperature in the vena contracta is:

$$T_{vc} = T_1 \left(\frac{P_{vc}}{P_1} \right)^{\left(\frac{k-1}{k} \right)} \quad (7.1)$$

The speed of sound ($M_n = 1$) is:

$$c_{vc} = \left(\frac{k R g_c T_{vc}}{M_w} \right)^{(1/2)} \quad (7.2)$$

Table 2 — Typical N_o and F_d factors

Valve Type	N_o		F_d	
	Flow to:		Flow to:	
	Open	Close	Open	Close
Single-Seat Globe	2.0	1.0	0.7[2]	1.0
Butterfly, Standard	2.0	2.0	0.7	0.7
Angle	2.0	1.0	0.7	1.0
Eccentric, Rotary Plug	2.0	1.0	0.7	1.0
Ball	1.0	1.0	1.0	1.0
Cage	[1]	[1]		
Double Seat, Parabolic	4.0	4.0	0.5	0.5

NOTES:

- 1) Use the number of apparent independent openings in the cage at the actual valve stem position (refer to the manufacturer's catalog for the valve under consideration).
- 2) See [Equation 6.2](#).

The gas velocity in the vena contracta is:

$$U_{vc} = \left\{ 2g_c \left(\frac{k}{k-1} \right) \left[1 - \left(\frac{P_{vc}}{P_1} \right)^{\left(\frac{k-1}{k} \right)} \right] \frac{P_1}{\rho_1} \right\}^{(1/2)} \quad (7.3)$$

The stream power of the fluid in the vena contracta is:

$$W_m = \frac{w(U_{vc})^2}{2g_c} \quad (7.4)$$

By definition, the Mach number is:

$$M_n = \frac{U_{vc}}{c_{vc}} \quad (7.5)$$

The acoustic efficiency for Regime I is:

$$\eta_I = (1 \times 10^{-4})(M_n^{3.6}) \quad (7.6)$$

The sound power generated is:

$$W_a = \eta_I W_m F_L^2 \quad (7.7)$$

NOTE: When the valve has attached fittings, replace F_L with F_{LP}/F_P .

The peak frequency of the generated noise from the geometry is:

$$f_p = \frac{0.2 U_{vc}}{D_j} \quad (7.8)$$

8 Common equations for sonic and above

The temperature in the vena contracta at sonic conditions is:

$$T_{vcc} = \frac{2T_1}{k+1} \quad (8.1)$$

The orificial velocity of sound is:

$$c_{vcc} = \left(\frac{k R g_c T_{vcc}}{M_w} \right)^{(1/2)} \quad (8.2)$$

The gas velocity in the vena contracta, at critical conditions, is:

$$U_{vcc} = \left\{ 2g_c \left(\frac{k}{k-1} \right) \left[1 - \left(\frac{P_{vcc}}{P_1} \right)^{\left(\frac{k-1}{k} \right)} \right] \frac{P_1}{\rho_1} \right\}^{(1/2)} \quad (8.3)$$

Stream power, at sonic (choked) velocity is:

$$W_{ms} = \frac{wU_{vcc}^2}{2g_c} \quad (8.4)$$

9 Regime II

The acoustic efficiency for Regime II is:

$$\eta_{II} = (1 \times 10^{-4})(M_j)^{(6.6F_L^2)} \quad (9.1)$$

NOTE: When the valve has attached fittings, replace F_L with F_{LP}/F_P .

The sound power generated is:

$$W_a = \eta_{II} W_{ms} \left(\frac{P_1 - P_2}{P_1 - P_{vcc}} \right) \quad (9.2)$$

The peak frequency of the generated noise from the geometry is:

$$f_p = \frac{0.2M_j c_{vcc}}{D_j} \quad (9.3)$$

10 Regime III

The acoustic efficiency for Regime III is:

$$\eta_{III} = (1 \times 10^{-4})(M_j)^{(6.6F_L^2)} \quad (10.1)$$

NOTE: When the valve has attached fittings, replace F_L with F_{LP}/F_P .

The sound power generated is:

$$W_a = h_{III} W_{ms} \quad (10.2)$$

The peak frequency of the generated noise from the geometry is:

$$f_p = \frac{0.2M_j c_{vcc}}{D_j} \quad (10.3)$$

11 Regime IV

The acoustic efficiency for Regime IV is:

$$\eta_{IV} = (1 \times 10^{-4}) \left(\frac{M_j^2}{2} \right) (\sqrt{2})^{(6.6 F_L^2)} \quad (11.1)$$

NOTE: When the valve has attached fittings, replace F_L with F_{LP}/F_P .

The sound power generated is:

$$W_a = \eta_{IV} W_{ms} \quad (11.2)$$

The peak frequency of the generated noise from the geometry is:

$$f_p = \frac{0.35 c_{vcc}}{1.25 D_j (M_j^2 - 1)^{(1 \text{ § } 2)}} \quad (11.3)$$

12 Regime V

$$M_j = \left\{ \left(\frac{2}{k-1} \right) \left[(22)^{\left(\frac{k-1}{k} \right)} - 1 \right] \right\}^{(1/2)} \quad (12.1)$$

The acoustic efficiency for Regime V is:

$$\eta_V = (1 \times 10^{-4}) \left(\frac{M_j^2}{2} \right) (\sqrt{2})^{(6.6 F_L^2)} \quad (12.2)$$

NOTE: When the valve has attached fittings, replace F_L with F_{LP}/F_P .

The sound power generated is:

$$W_a = \eta_V W_{ms} \quad (12.3)$$

The peak frequency of the generated noise from the geometry is:

$$f_p = \frac{0.35 c_{vcc}}{1.25 D_j (M_j^2 - 1)^{(1/2)}} \quad (12.4)$$

13 Noise calculations

The downstream temperature T_2 may be determined using thermodynamic isenthalpic relationships, provided that the necessary fluid properties are known. However, if the fluid properties are not known, T_2 may be taken as approximately equal to T_1 .

Downstream density is:

$$\rho_2 = \rho_1 \left(\frac{P_2}{P_1} \right) \quad (13.1)$$

The speed of sound under downstream conditions is:

$$c_2 = \left(\frac{k R g_c T_2}{M_w} \right)^{(1/2)} \quad (13.2)$$

This is calculated in order to calculate the Mach number. Internal sound pressure level is:

$$L_{pi} = 10 \log_{10} \left(\frac{N_L W_a \rho_2 c_2}{D_i^2} \right) \quad (13.3)$$

NOTE: The reference pressure used in (13.3) is 2×10^{-4} μ bar equivalent to $(2 \times 10^{-5}$ Pa).

The transmission loss at the coincidence frequency at the distance r is:

$$T_{Lfo} = 10 \log_{10} \left[N_T \left(\frac{D_i^3}{r t_p^2} \right) \frac{1}{\left(\frac{P_2}{P_o} + 1 \right)} \left(\frac{P_a}{P_o} \right) \right] \quad (13.4)$$

NOTE: The fraction P_a/P_o is a correction for local barometric pressure.

The pipe coincidence frequency is:

$$f_o = \frac{N_F}{4\pi D_i} \quad (13.5)$$

Sound travels through the pipe wall depending on the relationship between the peak generated frequency and the pipe coincidence frequency:

$$\text{If } f_p \leq f_o: \quad \text{then } \Delta T_{Lfp} = 20 \log_{10} \left(\frac{f_o}{f_p} \right) \quad (13.6)$$

$$\text{If } f_p > f_o \text{ and } f_p \leq 4f_o: \quad \text{then } \Delta T_{Lfp} = 13 \log_{10} \left(\frac{f_p}{f_o} \right) \quad (13.7)$$

$$\text{If } f_p > 4f_o: \quad \text{then } \Delta T_{Lfp} = 20 \log_{10} \left(\frac{f_p}{4f_o} \right) + 7.8 \quad (13.8)$$

Transmission loss is:

$$T_L = T_{Lfo} - \Delta T_{Lfp} \quad (13.9)$$

The transmission loss correction for downstream fluid velocity is approximately (limited to 0.3 Mach, maximum):

$$L_g = 16 \log_{10} \left[\frac{1}{1 - \left(\frac{N_p P_1 C_v F_L}{D_i^2 P_2} \right)} \right] \quad (13.10)$$

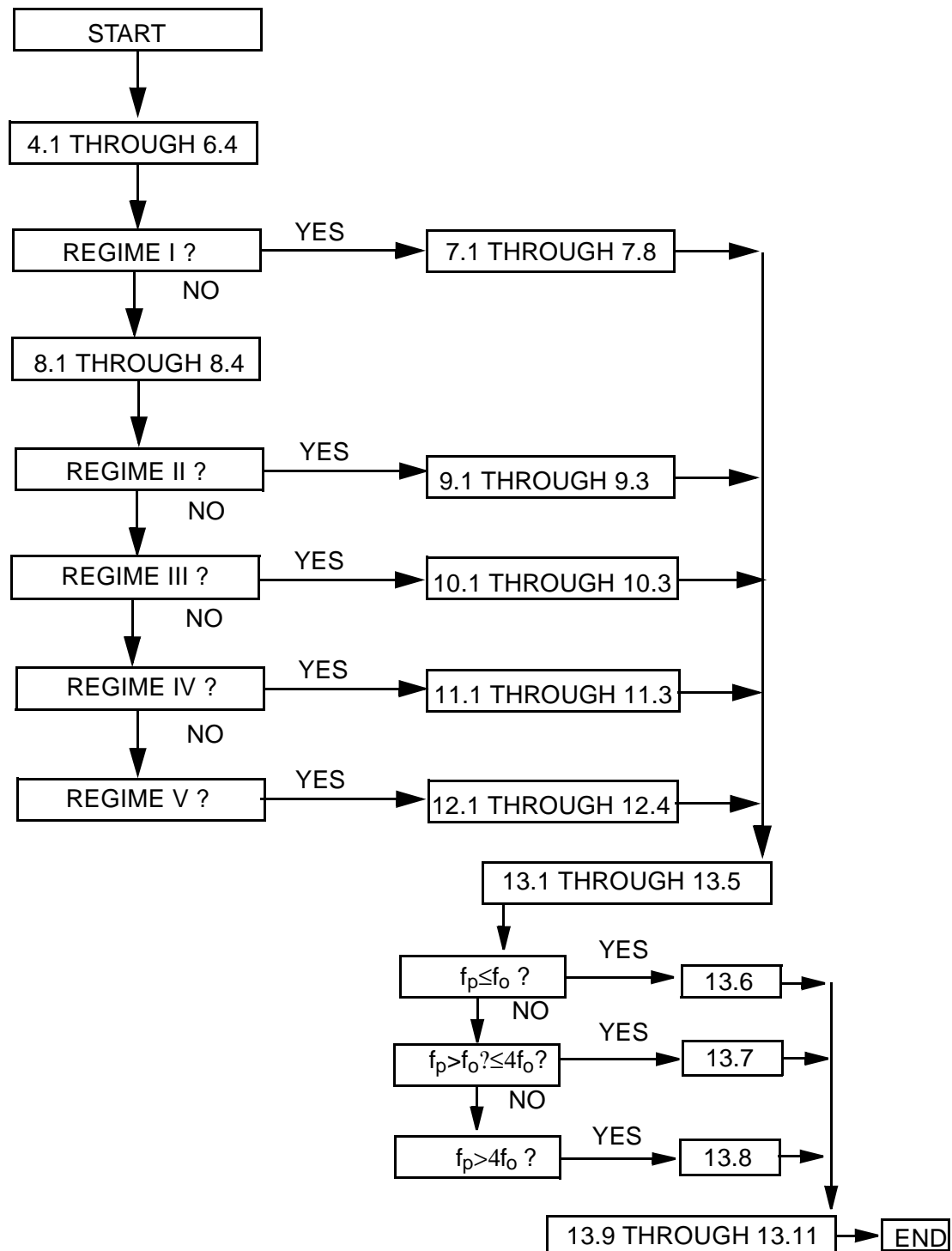
NOTE: Use the required C_v , not the rated value of C_v .

NOTE: When the valve has attached fittings, replace F_L with F_{LP}/F_P .

The sound level is:

$$L_a = 5 + L_{pi} + T_L + L_g \quad (13.11)$$

14 Calculation flow chart*



*Numbers are equation numbers.

Appendix A — References

- Lighthill, M. J., "On Sound Generated Aerodynamically: I. General Theory," *Proceedings of the Royal Society of London*, 211A (London, 1952), pp 564 - 587.
- Powell, A., "On the Mechanism of Choked Jet Noise," *Proc. Phys. Soc. London*, Sect. B., 66: 1039-57 (1953).
- Lighthill, M. J., "Jet Noise," *AIAA Journal*, 1, 1507-1517, July 1963.
- Fowcs Williams, J. E., and Hawkings, D. L., "Sound Generation by Turbulence and Surface in Arbitrary Motion," *Philosophic Transactions of the Royal Society of London*, Ser. A., 264 (London, 1969), pp 321-342.
- Baumann, H. D., "On the Prediction of Aerodynamically Created Sound Pressure Level of Control Valves," ASME Paper WM/FE 28, December 1970, p. 2.
- Fagerlund, A. C., and Chow, D. C., "Sound Transmission through a Cylindrical Pipe Wall," *ASME Journal of Engineering for Industry*, Vol. 103, November 1981, pp 355-360.
- Shea, Allen K., "A Comparative Study of Sound Level Prediction Methods for Control Valves," Master of Engineering Report, The Pennsylvania State University, Behrend Campus, Erie, PA, August 1982.
- Baumann, H. D., "Coefficients and Factors Relating to Aerodynamic Sound Level Generated by Throttling Valves," *Noise Control Engineering Journal*, Vol. 22, No. 1, January 1984, pp 6-11.
- ANSI/ISA-S75.01-1985, Flow Equations for Sizing Control Valves, ISA, Research Triangle Park, NC 27709.
- Ward, W. C., and Reethoff, G., "Graphical Implementation of a Fundamentals-Based Method of Aerodynamic Control Valve Noise," American Society of Mechanical Engineers Conference on Pressure Vessels and Piping, *Proceedings*, Vol. 2, June 24-26, 1985.
- Reethoff, G., and Ward, W. C., "A Theoretically Based Valve Noise Prediction Method for Compressible Fluids," *Journal of Vibrations, Acoustics, Stress, and Reliability in Design*, ASME, July 1986, 00329.
- Baumann, H. D., "A Method for Predicting Aerodynamic Valve Noise Based on Modified Free Jet Noise Theories," ASME Paper 87-WA/NCA-7 28, December 1987.

Appendix B — Example

This is not a part of the standard, but is included to show how it is used. Values are given to more places than justified to make checking easier.

Given Data

4-inch valve; maximum $C_v = 210$; C_v used = 210; $F_L = 0.8$. Inlet pipe nominal 8 inch; outlet pipe same; wall is 0.322 inch.

Fluid is vapor: 165 psia; density, 0.341817 lbm/ft³; $T = 350^\circ\text{F}$

$k = 1.33$

Molecular weight, 18.

Downstream pressure, 70 psia; equivalent sound orifices = 1. Installed flow-to-close.

Actual atmospheric pressure, 14.696 psia.

The numbers on the right-hand side, for example, (4.1), are the equation numbers as used in this standard.

From calculations based on ANSI/ISA-S75.01, Flow Equations for Sizing Control Valves, the following five values are calculated:

$$K_i = 1.2187500$$

$$F_P = 0.92715341$$

$$F_{LP} = 0.74568802$$

$$F_{LP}/F_P = 0.80427682$$

$$w = 50247.711 \text{ lbm/hr}$$

$$P_{vc} = P_1 - \frac{(P_1 - P_2)}{F_L^2} \quad (4.1)$$

$$P_1 = 23760 \text{ lbf/ft}^2$$

$$P_2 = 10080 \text{ lbf/ft}^2$$

$$F_{LP}/F_P = 0.80427682 \text{ (} F_{LP}/F_P \text{ used because fittings are attached)}$$

Result

$$P_{vc} = 2611.7227 \text{ lbf/ft}^2$$

$$P_{vcc} = P_1 \left(\frac{2}{k+1} \right)^{\left(\frac{k}{k-1} \right)} \quad (4.2)$$

$$P_1 = 23760 \text{ lbf/ft}^2$$

$$k = 1.33$$

Result

$$P_{VCC} = 12839.048 \text{ lbf/ft}^2$$

$$P_{2C} = P_1 - F_L^2(P_1 - P_{VCC}) \quad (4.3)$$

$$P_1 = 23760 \text{ lbf/ft}^2$$

$$F_{LP}/F_P = .080427682 \text{ (} F_{LP}/F_P \text{ used because fittings are attached)}$$

$$P_{VCC} = 12839.048 \text{ lbf/ft}^2$$

Result

$$P_{2C} = 16695.660 \text{ lbf/ft}^2$$

$$\alpha = \frac{\left(\frac{P_1}{P_{2C}}\right)}{\left(\frac{P_1}{P_{VCC}}\right)} = \frac{P_{VCC}}{P_{2C}} \quad (4.4)$$

$$P_{VCC} = 12839.048 \text{ lbf/ft}^2$$

$$P_{2C} = 16695.660 \text{ lbf/ft}^2$$

Result

$$\alpha = 0.76900512$$

$$P_{2B} = \frac{P_1}{\alpha} \left(\frac{1}{k}\right)^{\left(\frac{k}{k-1}\right)} \quad (4.5)$$

$$P_1 = 23760 \text{ lbf/ft}^2$$

$$\alpha = 0.76900512$$

$$k = 1.33$$

Result

$$P_{2B} = 9789.4346 \text{ lbf/ft}^2$$

$$P_{2CE} = \frac{P_1}{22\alpha} \quad (4.6)$$

$$P_1 = 23760 \text{ lbf/ft}^2$$

$$\alpha = 0.76900512$$

Result

$$P_{2CE} = 1404.4120 \text{ lbf/ft}^2$$

$$\text{IF: } P_{vcc} > P_2 \geq P_{2B}; \quad \text{then Regime} = \text{III} \quad (5.3)$$

$$12839.048 > 10080 > 9789.4346 \quad \text{Thus, regime is III.}$$

$$F_d = N_o^{(-1/2)} \quad (6.1)$$

$$N_o = 1.0000$$

Result

$$F_d = 1.00000$$

$$D_j = N_J F_d (C_v F_L)^{(1/2)} \quad (6.3)$$

$$N_J = 1.5 \times 10^{-2}$$

$$F_d = 1.00$$

$$C_v = 210.0$$

$$F_{LP}/F_P = 0.80427682 \text{ (fittings attached)}$$

Result

$$D_j = 0.19494122 \text{ ft}$$

$$M_j = \left\{ \left(\frac{2}{k-1} \right) \left[\left(\frac{P_1}{\alpha P_2} \right)^{\left(\frac{k-1}{k} \right)} - 1 \right] \right\}^{(1/2)} \quad (6.4)$$

$$k = 1.33$$

$$P_1 = 23760 \text{ lbf/ft}^2$$

$$P_2 = 10080 \text{ lbf/ft}^2$$

$$\alpha = 0.76900512$$

Result

$$M_j = 1.3934534$$

$$T_{vcc} = \frac{2 T_1}{k+1} \quad (8.1)$$

$$k = 1.33$$

$$T_1 = 809.68988^\circ\text{R}$$

Result

$$T_{VCC} = 695.01270 \text{ R}$$

$$c_{VCC} = \left(\frac{kRg_c T_{VCC}}{M_w} \right)^{(1/2)} \quad (8.2)$$

$$k = 1.33$$

$$R = 1545 \text{ ft-lbf/lbm-mole-}^\circ\text{R}$$

$$T_{VCC} = 695.01270^\circ\text{R}$$

$$g_c = 32.17 \text{ lbm-ft/lbf-s}^2$$

$$M_w = 18.0$$

Result

$$c_{VCC} = 1597.6282 \text{ ft/s}$$

$$U_{VCC} = \left\{ 2g_c \left(\frac{k}{k-1} \right) \left[1 - \left(\frac{P_{VCC}}{P_1} \right)^{\left(\frac{k-1}{k} \right)} \right] \frac{P_1}{\rho_1} \right\}^{(1/2)} \quad (8.3)$$

$$k = 1.33$$

$$P_{VCC} = 12839.048 \text{ lbf/ft}^2$$

$$P_1 = 23760 \text{ lbf/ft}^2$$

$$\rho_1 = 0.34181735 \text{ lbm/ft}^3$$

Result

$$U_{VCC} = 1597.7712 \text{ ft/s}$$

$$W_{ms} = \frac{wU_{VCC}^2}{2g_c} \quad (8.4)$$

$$w = 50247.711 \text{ lbm/hr or } 50000/3600 \text{ lbm/s}$$

$$U_{VCC} = 1597.7712 \text{ ft/s}$$

$$g_c = 32.17 \text{ lbm-ft/lbf-s}^2$$

Result

$$W_{ms} = 553811.56 \text{ ft-lbf/s}$$

$$\eta_{III} = (1 \times 10^{-4})(M_j)^{(6.6F_L^2)} \quad (10.1)$$

$$M_j = 1.3934534$$

$$F_{LP}/F_P = 0.80427682$$

Result

$$\eta_{III} = 0.00041226027$$

$$W_a = \eta_{III} W_{ms} \quad (10.2)$$

$$W_{ms} = 553811.56 \text{ ft-lbf/s}$$

$$\eta_{III} = 0.00041226027$$

Result

$$W_a = 228.31450 \text{ ft-lbf/s}$$

$$f_p = \frac{0.2 M_j c_{vcc}}{D_j} \quad (10.3)$$

$$c_{vcc} = 1597.6282 \text{ ft/s}$$

$$M_j = 1.3934534$$

$$D_j = 0.19494122 \text{ ft}$$

Result

$$f_p = 2283.9912 \text{ Hz}$$

$$\rho_2 = \rho_1 \left(\frac{P_2}{P_1} \right) \quad (13.1)$$

$$\rho_1 = 0.34181735 \text{ lbm/ft}^3$$

$$P_1 = 23760 \text{ lbf/ft}^2$$

$$P_2 = 10080 \text{ lbf/ft}^2$$

Result

$$\rho_2 = 0.14501342 \text{ lbm/ft}^2$$

$$c_2 = \left(\frac{k R g_c T_2}{M_w} \right)^{(1/2)} \quad (13.2)$$

$$k = 1.33$$

$$R = 1545 \text{ ft-lbf/lbm-mole-}^\circ\text{R}$$

$$T_2 = 809.68988^\circ\text{R}$$

$$g_c = 32.17 \text{ lbm-ft/lbf-s}^2$$

$$M_w = 18.0$$

Result

$$C_2 = 1724.4027 \text{ ft/s}$$

$$L_{pi} = 10 \log_{10} \left(\frac{N_L W_a \rho_2 C_2}{D_i^2} \right) \quad (13.3)$$

$$N_L = 5.7 \times 10^{10}$$

$$W_a = 228.31450 \text{ ft-lbf/s}$$

$$\rho_2 = 0.14501342 \text{ lbm/ft}^3$$

$$C_{VCC} = 1597.6282 \text{ ft/s}$$

$$D_i = 0.6666667 \text{ ft}$$

Result

$$L_{pi} = 158.64638 \text{ dB}$$

$$T_{Lfo} = 10 \log_{10} \left[N_T \left(\frac{D_i^3}{rt_p^2} \right) \frac{1}{\left(\frac{P_2}{P_o} + 1 \right)} \frac{P_a}{P_o} \right] \quad (13.4)$$

$$N_T = 1.1 \times 10^{-7}$$

$$D_i = 0.6666667 \text{ ft}$$

$$r = 3.5 \text{ ft}$$

$$t_p = 0.322/12 \text{ ft}$$

$$P_2 = 10080 \text{ lbf/ft}^2$$

$$P_o = 2166.2241 \text{ lbf/ft}^2$$

$$P_a = 2166.2241 \text{ lbf/ft}^2$$

Result

$$T_{Lfo} = -56.489620 \text{ dB}$$

$$f_o = \frac{N_F}{4\pi D_i} \quad (13.5)$$

$$N_F = 1.6 \times 10^4$$

$$\pi = 3.14159265359$$

$$D_i = 0.6666667 \text{ ft}$$

Result

$$f_o = 1909.8608 \text{ Hz}$$

$$\text{If } f_p > f_o \text{ and } f_p \leq 4f_o; \text{ then } \Delta T_{Lfp} = 13 \log_{10} \left(\frac{f_p}{f_o} \right) \quad (13.6)$$

$$2283.9912 > 1909.8608 \text{ and } 2283.9912 \leq 7639.4432$$

$$f_p = 2283.9912 \text{ Hz}$$

$$f_o = 1909.8608 \text{ Hz}$$

Result

$$\Delta T_{Lfp} = 1.0100050 \text{ dB}$$

$$\text{Transmission loss is: } T_L = T_{Lfo} - \Delta T_{Lfp} \quad (13.8)$$

$$T_{Lfo} = -56.489620 \text{ dB}$$

$$\Delta T_{Lfp} = 1.0100050 \text{ dB}$$

Result

$$T_L = -57.499626 \text{ dB}$$

$$L_g = 16 \log_{10} \left[\frac{1}{1 - \left(\frac{N_p P_1 C_v F_L}{D_1^2 P_2} \right)} \right] \quad (13.9)$$

$$N_p = 1.5 \times 10^{-4}$$

$$P_1 = 23760 \text{ lbf/ft}^2$$

$$C_v = 210.0$$

$$F_{LP}/F_P = 0.80427682 \text{ (used because of fittings)}$$

$$D_i = 0.6666667 \text{ ft}$$

$$P_2 = 10080 \text{ lbf/ft}^2$$

Result

$$L_g = 1.0026389 \text{ dB}$$

$$L_a = 5 + L_{pi} + T_L + L_g \quad (13.10)$$

$$T_L = -57.499626 \text{ dB}$$

$$L_g = 1.0026389 \text{ dB}$$

$$L_{pi} = 158.31476 \text{ dB}$$

Result

$$L_a = 107.14939 \text{ dB (A)}$$

Use: 107 dB (A)

Check downstream Mach:

$$w = 50247.711 \text{ lb/hr}$$

$$\rho_2 = 0.14501342 \text{ lb/ft}^3$$

$$D_i = 0.6666667 \text{ ft}$$

$$U_2 = \frac{\text{Volume flow}}{\text{Flow area}}$$

$$\begin{aligned}\text{Volume flow} &= \left(\frac{50247.711}{3600} \right) \left(\frac{1}{0.14501342} \right) \\ &= 96.2511 \text{ ft}^3/\text{sec}\end{aligned}$$

$$\text{Flow area} = \left(\frac{0.6666667}{2} \right)^2 \pi = 0.3490659 \text{ ft}^2$$

$$U_2 = 275.73923 \text{ ft/sec}$$

$$M_{n2} = \frac{vel}{c} = \frac{275.73923}{1724.4027} = 0.1599$$

Thus, calculation is appropriate.

Developing and promulgating technically sound consensus standards, recommended practices, and technical reports is one of ISA's primary goals. To achieve this goal the Standards and Practices Department relies on the technical expertise and efforts of volunteer committee members, chairmen, and reviewers.

ISA is an American National Standards Institute (ANSI) accredited organization. ISA administers United States Technical Advisory Groups (USTAGs) and provides secretariat support for International Electrotechnical Commission (IEC) and International Organization for Standardization (ISO) committees that develop process measurement and control standards. To obtain additional information on the Society's standards program, please write:

ISA
Attn: Standards Department
67 Alexander Drive
P.O. Box 12277
Research Triangle Park, NC 27709

ISBN: 1-55617-207-9